

The background of the entire image is a night cityscape, likely New York City, with numerous skyscrapers illuminated. Overlaid on this are numerous vertical and diagonal lines of light in blue, purple, and white, resembling data streams or fiber optic connections. On the left and right sides, there are white, curved, wavy lines that sweep across the frame.

shared accessTM
enterprise

BUILDING TRUE 21ST
CENTURY CONNECTIVITY
INTO EVERY BUILDING

A FUNDAMENTAL NEED

Today, right now... where would we be without reliable, superfast connectivity?

It's no longer a nice-to-have. It's a fundamental need. Everyone expects it. Everyone demands it. And at Shared Access Enterprise, we provide it.

We're one of the UK's leading providers of cost-effective, in-building, wireless connectivity for every commercial, residential, retail or public building, new or old. With us, you can future-proof a new development by building connectivity right into the infrastructure. And if you need to update an existing building to bring it true 21st Century connectivity, we'll help you retro-fit seamlessly.

We take care of everything, from start to finish. We even cover the upfront installation cost. All you need to do is decide when you want the system to go live.





THE NEW NORMAL



NEW CHALLENGES

The new normal. Millions have started working from home. Which presents a whole new challenge to landlords and businesses. Unprecedented pressure is on to supply flawless, high-speed, always-on, in-building mobile connectivity to residents, employees and visitors.

Landlords, agents, developers and architects will all be judged on their ability to supply that level of connectivity to all the National Mobile Network Operators. It's no longer a nice-to-have, to entice renters or people back to the office. It's an imperative.

And that's exactly what we do.

**YOU'RE IN
GREAT HANDS**

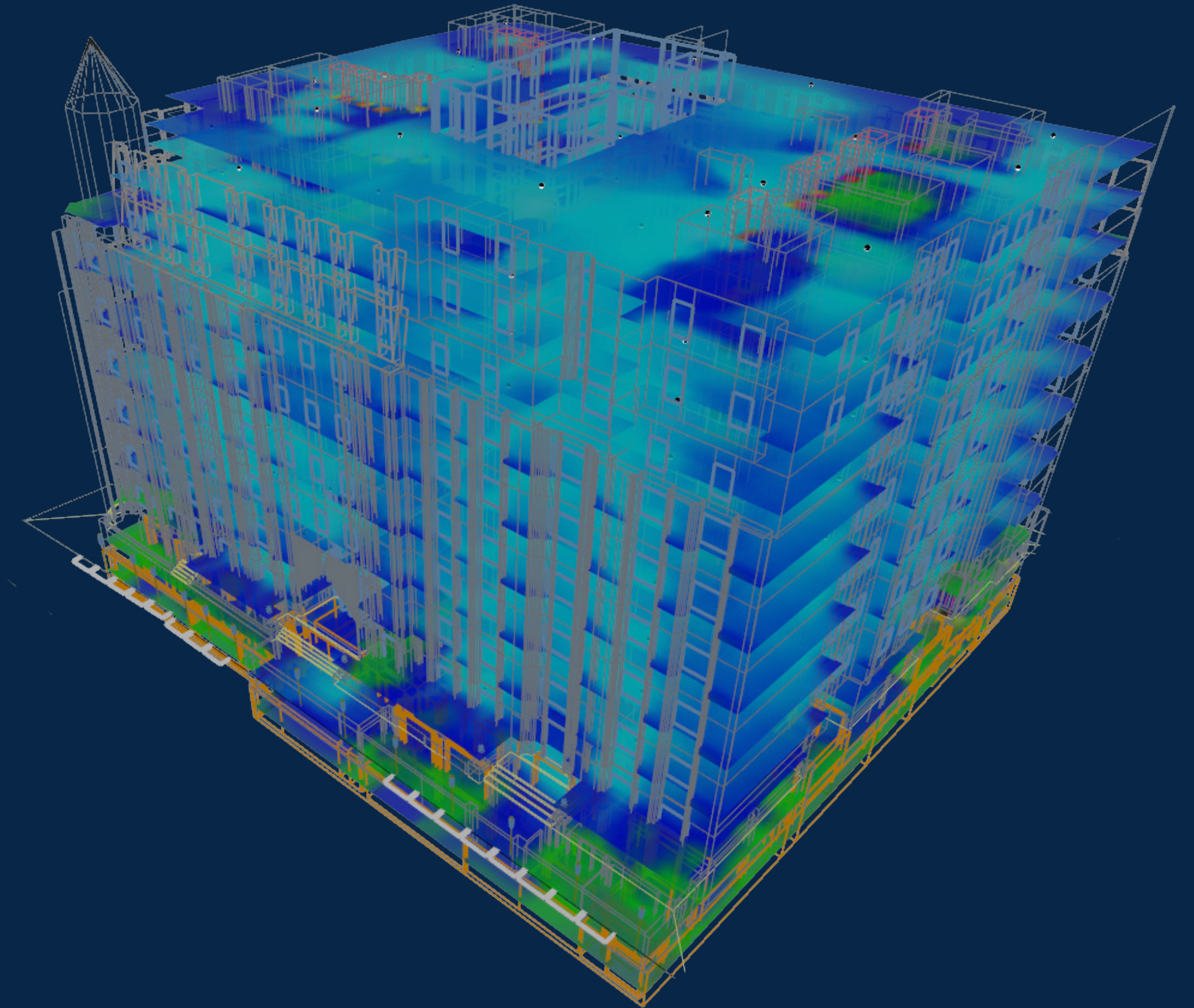
MAKING IT EASY

Installing cutting edge wireless network systems, giving everyone access to every National Mobile Operator Network... that's us. And no one knows how to do it better. Because it's ALL we do.

We take care of everything - and promise you that the whole process is as easy as it gets.

Our unique model means there's no big upfront cost to you. We even cover the cost of the initial survey and proposal. You simply pay an annual license fee.

And because we know how precious your time is, we take absolute pride in future-proofing our clients' buildings for 5G and beyond in an average time of just 3 months, from start to finish.





**THE FUTURE IS JUST
A FEW STEPS AWAY**

THE PROCESS

We make sure you're clear on every step of the process from start to finish. Our hugely experienced team is always there for you, to answer any questions, every step of the way.

1

We'll give you a proposal, based on the square footage of your building.

2

We cover the cost of a full design survey and coverage examination.

3

We design coverage maps and a 3D model of your building, then agree on an installation plan.

4

We liaise with all the National Mobile Network Operators on your behalf, optimising everything for all networks as we go.

5

We install, test and get the system live.

6

We stay with you, via ongoing system management and maintenance.



**SHOW ME
THE MONEY**

ACCREDITATION

You're in this to make a profit or build a business. And that, you want to secure for years to come.

We know that buildings that are Wired Certified command 4.7% more in rent, than similar buildings without accreditation*. Now that's a number anyone can appreciate.

WiredScore is the global organisation that owns and operates Wired Certification, a digital connectivity certification that rates the quality and resilience of digital infrastructure in buildings all over the world.

We'll help you use the WiredScore model, to increase the value and yield of your property.

*Source: [Wired Score and Radius Data Exchange 'The Value of Digital Workplaces' 2019](#)

PLATINUM



Attributed to buildings and redevelopments that offer best in-class connectivity – including Metal Box Factory. Only 21 other buildings across London have currently achieved the WiredScore Platinum rating.

GOLD



Awarded in recognition of reliable and diverse internet connectivity within commercial buildings and prepared for connectivity needs of future tenants. The Gold standard is a benchmark we're striving to achieve for the majority of workspace business centres in the coming years.

SILVER



Awarded to buildings that meet the connectivity needs of today's commercial tenants.

CERTIFIED



Awarded to commercial developments that meet the minimum WiredScore standards.



WHY US?

WHY SHARED ACCESS?

We're digital problem solvers. True specialists.

Since our inception back in 2007, we've implemented crucial connectivity infrastructure for buildings, shopping centres, stadiums and entire communities.

Systems that ensure a consistent and uninterrupted wireless connection for a wide range of clients from the incredible new Tottenham Hotspur Stadium to the National Air Traffic Service.

Our operations span the UK, Ireland and Spain, where we've designed, built, acquired and operated over 1,000 masts and installed countless high-profile in-building systems with in excess of 2,000 active antennas.

We're living through incredible times. A true information revolution. The digital world is expanding exponentially.

We've never been more data hungry. And with Shared Access Enterprise, you can offer your clients, your tenants, your visitors, your people, unlimited access to it all.

CONNECT WITH US

You'll find more information about our service at:
www.sharedaccess.com.

Or you can call, text or email our Chief Development Officer,
Sam Jackman, directly on
+44 7900 914 307
or at
sam.jackman@sharedaccess.com

Future-proofing your building is just one connection away.